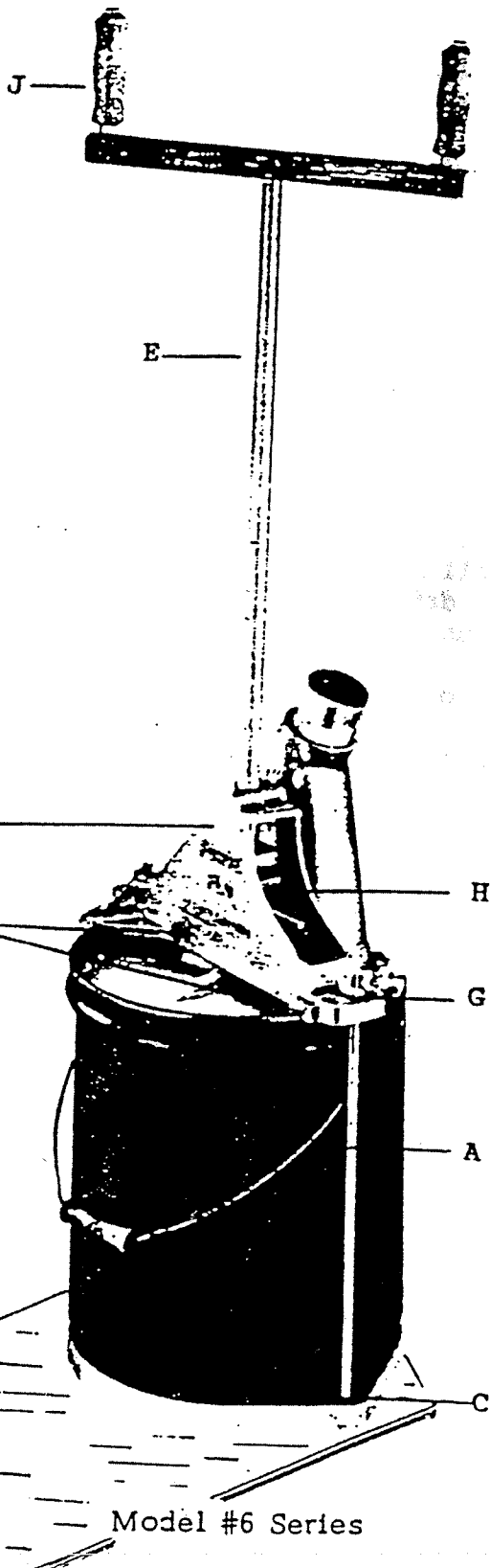


ALBION ENGINEERING CO.

2080A WHEATSHEAF LANE • PHILADELPHIA, PA 19124
(215) 535-3476

ASSEMBLY & OPERATING INSTRUCTIONS
MODEL #344-6 SERIES CAULKING LOADER



Model #6 Series

ASSEMBLY:

Remove wing nuts from tie rods (a). Place tie rods (a) through holes (c) in base (b). Remove cover from pail of material. Place pump assembly on top of pail and place piston assembly on material in pail. Opening split-nut assembly (h) will permit bridge assembly (m) to settle on rim of pail making sure grooves (k) kit snug on rim... (be sure to guide tie rods (a) through holes (g) on each end of bridge casting (m). Secure wing nuts. Be sure split assembly (h) is closed evenly onto threaded drive rod (e). Turn handle (j) clockwise slowly until outlet on piston casting is filled with material. NOTE: Material flow can be halted immediately by backing handle (j) counter clockwise approximately 1 turn.

OPERATION:

After removing caulking gun nozzle cap, make sure follower rod in caulking gun is completely depressed and released from ratchet mechanism. Secure caulking gun cylinder into extension outlet of Loader pump.

Turn handle (j) approx. 5-6 turns clockwise until follower rod of caulking gun is completely extended. The caulking gun is filled. Back handle (j) counter clockwise about 1 turn to release pressure in pail. Remove caulking gun and assemble end cap.

When pail is empty, remove bridge assembly (m) from tie rods (a). Opening split-nut assembly (h) will allow bridge assembly to slide up and down threaded drive rod (e) freely. Pull threaded drive rod to one side of pail to release vacuum in pail. Piston assembly can then be raised easily out of empty pail.

Periodically rub coal tar or suitable lubricant on inside of caulking gun cylinder, and also to outside of neoprene seal on piston of loader for easy operation.

ASSEMBLY:

Remove wing nuts from tie rods (Part #336 - 2 pcs). Place tie rods through holes in base casting (part 323) bolted to steel base plate. Remove cover from pail of material. Place pail on base casting making sure pail fits flush on base. Place piston assembly (part #384) on material in pail and adjust bridge casting (part #386) on rim of pail making sure grooves in bridge casting fit onto rim of pail... guide tie rods through holes on each end of bridge casting. Secure wing nuts. Make sure swing nut assembly (Part #385) is closed against threads of screw drive rod (part #377). Assemble handle assembly (part #375) to screw rod placing 3/8" bolt through hole at top of screw rod and assembly wing nut. After assembly, turn handle until material fills piston casting neck and is visible. DO NOT CONTINUE TO TURN HANDLE. MATERIAL WILL EXTRUDE FROM OUTLET ADAPTER UNTIL YOUR CAULKING GUN IS ATTACHED.

OPERATION - FILLING CAULKING GUN:

After removing end cap from caulking gun barrel, make sure follower rod in caulking gun is completely compressed and released from ratchet (drive) mechanism. Engage caulking gun cylinder threads onto female threads of outlet adapter (part #356) on piston casting assembly.

Turn screw drive rod handle (part #375) - driving loader piston into pail - filling caulking gun. The follower rod on your caulking gun will become completely extended when gun is filled with material. Reverse screw drive rod to relieve pressure in pail (about 1/2-1 turn). Remove caulking gun and assembly nozzle cap.

Your caulking gun is completely filled with material - no air pockets or mess.

When pail is empty, remove wing nuts from tie rods, release tie rods from bridge casting. Pull screw drive rod and piston assembly to one side of pail to release vacuum in pail. Remove piston assembly and bridge from empty pail and place in new pail.

NOTE: To open swing nut assembly #385 (grasp rod on each side and pull up). The split nut assembly will disengage from the screw drive rod permitting easy sliding of the bridge casting up or down. To engage, close swing nut assembly onto screw drive rod (check to see split nut assembly has engaged screw drive rod evenly). When turning pump handle #375, the split nut assembly will automatically align to the screw drive rod.

#385-1B SPLIT-NUT OPERATION

THE #385-1B SPLIT-NUT ASSEMBLY HAS BUILT IN GUIDES TO ALIGN ON THE SCREW ROD EVENLY. BY RAISING UP ON BOTH RODS OF THE SPLIT NUT ASSEMBLY, THE SPLIT-NUT WILL OPEN PERMITTING EASY MOVEMENT OF THE BRIDGE CASTING UP & DOWN ON THE SCREW ROD. TO ENGAGE THE SPLIT NUT ON THE SCREW ROD FOR OPERATION OF YOUR CAULKING LOADER, AFTER THE BRIDGE CASTING IS ALIGNED ON YOUR PAIL, AND THE TIE RODS ARE SECURE, CLOSE ONE SIDE OF THE SPLIT-NUT TO ENGAGE THE SCREW ROD THREADS, THEN CLOSE THE OTHER SIDE. EITHER SIDE CAN BE ENGAGED FIRST. IT MAY BE NECESSARY TO TURN SCREW ROD ONE OR TWO TURNS TO ALIGN THE SECOND HALF OF THE SPLIT-NUT TO THE SCREW ROD.

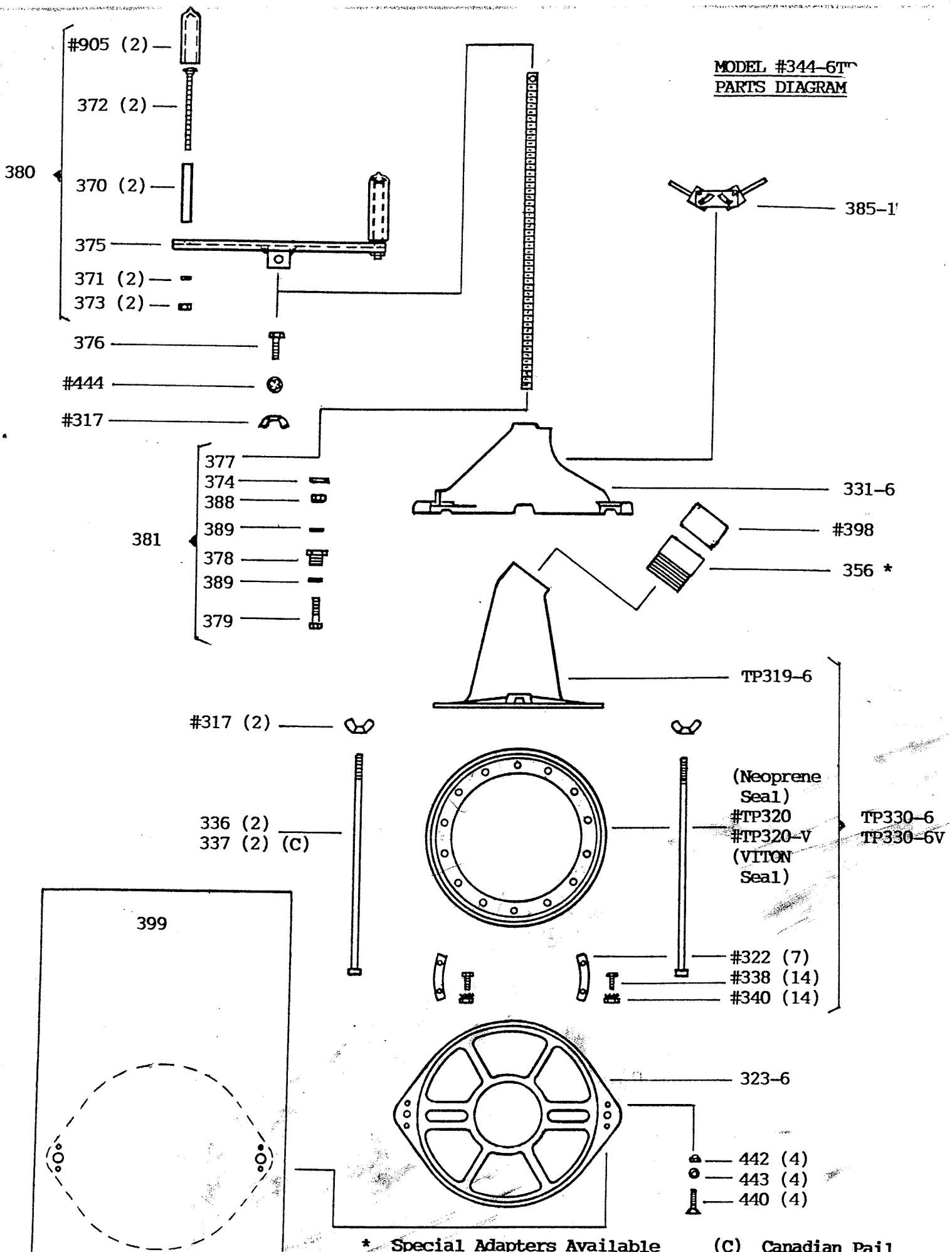
ALBION Engineering Co.
1250 N. Church Street
Moorestown, NJ 08057-1102
856-235-6688 Direct dial fax: 856-235-9460

MODEL #6

PARTS LIST FOR MODEL #344-6 SCREW STYLE CAULKING LOADER

<u>Part No:</u>	<u>Description:</u>
343-H 317	Wing Nut (3)
" " 319-6	Piston Casting
" " 320	Neoprene Seal
320-V	VITON Seal
322	Segment (8)
323-6	Base Casting
330-6	Piston Casting Assy. (Neoprene Seal)
330-6V	Piston Casting Assy. (VITON Seal)
331-6	Bridge Casting
336	Tie Rod (2)
337	Tie Rod (2) Canadian
338	Bolt (16)
340	Nut/Washer (16)
349	Tube Extension Adapter
356	Threaded Adapter
357	Cartridge Adapter (10 ounce)
363-6	Repair Kit (Neoprene Seal)
363-6V	Repair Kit (VITON seal)
370	Handle (2)
371	7/16 Lock Washer (2)
372	7/16 x 5 Bolt (2)
373	7/16-14 Nut (2)
374	3/8 Lock Washer
375	T-Handle
376	3/8-16 Bolt
377	7/8-9 Screw Rod
378	Bushing
379	3/8-16 Bolt
380	Handle Assembly
381	Screw Rod Assembly
385	Split-Nut Assembly
388	3/8-16 Jam Nut
389	Washer (2)
398	Adapter Cap
399	Steel Base Plate
440	1/4-20 Screw (4)
442	1/4-20 Cap Nut (4)
443	Lock Washer (4)
444	3/8 Lock Washer
905	Plastic Handle Grip (2)

MODEL #344-6T^m
PARTS DIAGRAM



* Special Adapters Available (C) Canadian Pail
 # Parts in #363 Series Repair Kits